

**GLRX5 Antibody (C-term)**  
**Affinity Purified Rabbit Polyclonal Antibody (Pab)**  
**Catalog # AP5035b**

**Specification**

---

**GLRX5 Antibody (C-term) - Product Information**

Application	FC, WB,E
Primary Accession	<a href="#">Q86SX6</a>
Reactivity	Human
Host	Rabbit
Clonality	Polyclonal
Isotype	Rabbit IgG
Calculated MW	16628
Antigen Region	129-157

**GLRX5 Antibody (C-term) - Additional Information**

**Gene ID** 51218

**Other Names**

Glutaredoxin-related protein 5, mitochondrial, Monothiol glutaredoxin-5, GLRX5, C14orf87

**Target/Specificity**

This GLRX5 antibody is generated from rabbits immunized with a KLH conjugated synthetic peptide between 129-157 amino acids from the C-terminal region of human GLRX5.

**Dilution**

FC~~1:10~50

WB~~1:1000

E~~Use at an assay dependent concentration.

**Format**

Purified polyclonal antibody supplied in PBS with 0.09% (W/V) sodium azide. This antibody is purified through a protein A column, followed by peptide affinity purification.

**Storage**

Maintain refrigerated at 2-8°C for up to 2 weeks. For long term storage store at -20°C in small aliquots to prevent freeze-thaw cycles.

**Precautions**

GLRX5 Antibody (C-term) is for research use only and not for use in diagnostic or therapeutic procedures.

**GLRX5 Antibody (C-term) - Protein Information**

**Name** GLRX5

**Synonyms** C14orf87

**Function** Monothiol glutaredoxin involved in mitochondrial iron-sulfur (Fe/S) cluster transfer (PubMed:[20364084](#), PubMed:[23615440](#)). Receives 2Fe/2S clusters from scaffold protein ISCU and mediates their transfer to apoproteins, to the 4Fe/FS cluster biosynthesis machinery, or export from mitochondrion (PubMed:[20364084](#), PubMed:[23615440](#), PubMed:[24334290](#)). Required for normal regulation of hemoglobin synthesis by the iron- sulfur protein ACO1 (PubMed:[20364084](#)).

**Cellular Location**

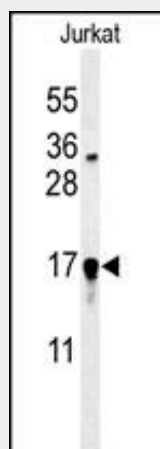
Mitochondrion matrix

**GLRX5 Antibody (C-term) - Protocols**

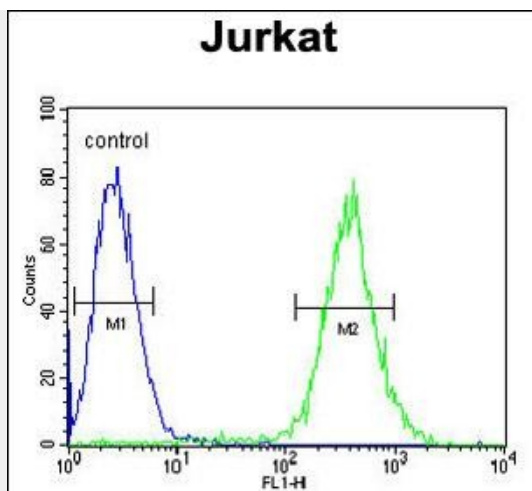
Provided below are standard protocols that you may find useful for product applications.

- [Western Blot](#)
- [Blocking Peptides](#)
- [Dot Blot](#)
- [Immunohistochemistry](#)
- [Immunofluorescence](#)
- [Immunoprecipitation](#)
- [Flow Cytometry](#)
- [Cell Culture](#)

**GLRX5 Antibody (C-term) - Images**



Western blot analysis of GLRX5 Antibody (C-term) (Cat. #AP5035b) in Jurkat cell line lysates (35ug/lane). GLRX5 (arrow) was detected using the purified Pab.



GLRX5 Antibody (C-term) (Cat. #AP5035b) flow cytometric analysis of Jurkat cells (right histogram) compared to a negative control cell (left histogram). FITC-conjugated goat-anti-rabbit secondary antibodies were used for the analysis.

#### **GLRX5 Antibody (C-term) - Background**

GLRX5 is monothiol glutaredoxin involved in the biogenesis of iron-sulfur clusters. GLRX5 required for normal iron homeostasis. GLRX5 is required for normal regulation of hemoglobin synthesis by the iron-sulfur protein ACO1.

#### **GLRX5 Antibody (C-term) - References**

Bergmann, A.K., et al. *Pediatr Blood Cancer* 54(2):273-278(2010)  
Camaschella, C., et al. *Blood* 110(4):1353-1358(2007)  
Wingert, R.A., et al. *Nature* 436(7053):1035-1039(2005)